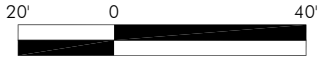
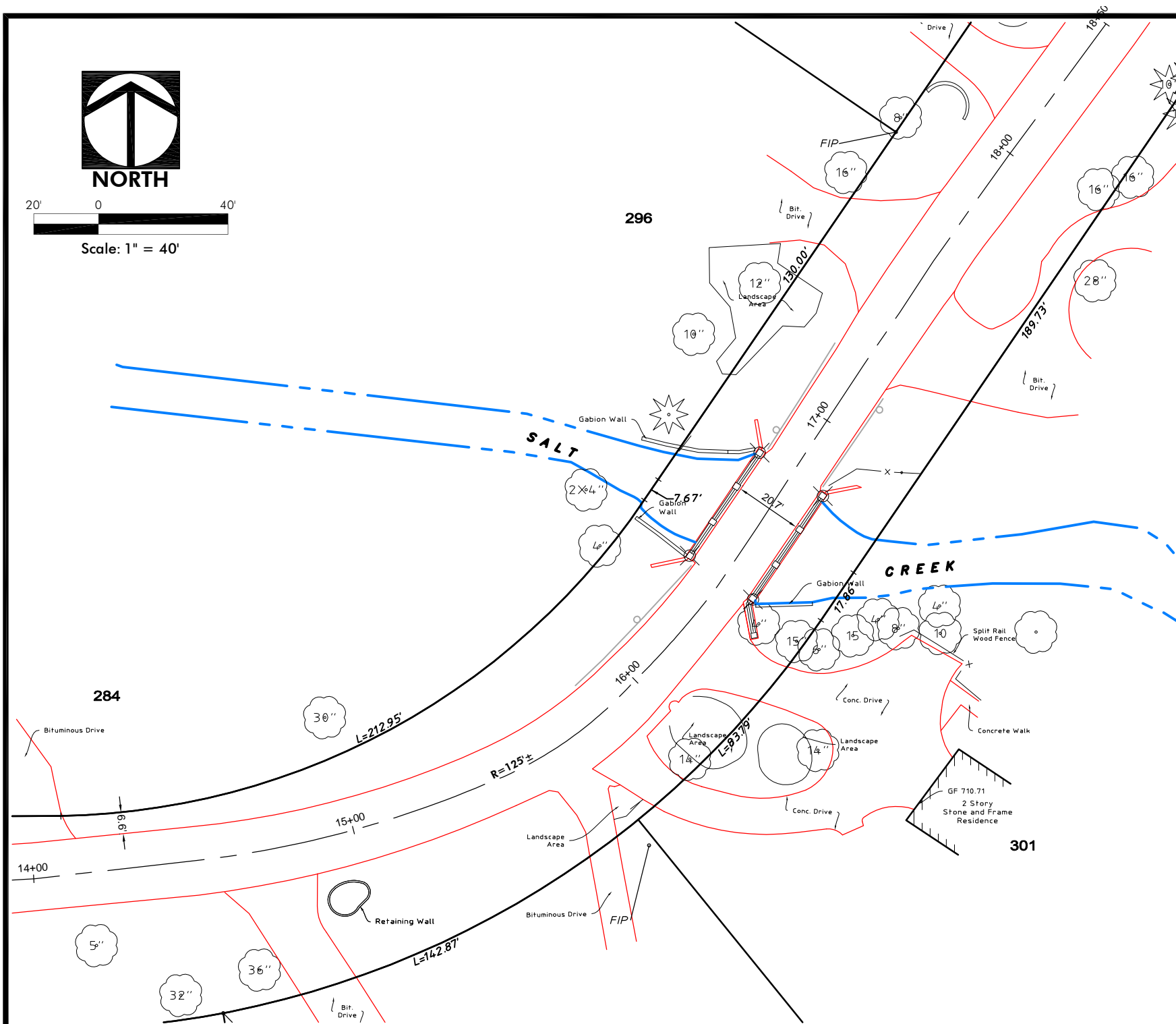


NORTH



Scale: 1" = 40'



HAEGER ENGINEERING
 consulting engineers • land surveyors
 1304 N. Plum Grove Road, Schaumburg, IL 60173 • Tel: 847.394.6600 Fax: 847.394.6608
 Illinois Professional Design Firm License No. 184-003152
 www.haegerengineering.com

EXISTING CONDITIONS
EXHIBIT - ALTERNATE ALIGNMENT
BRIARWOOD LANE

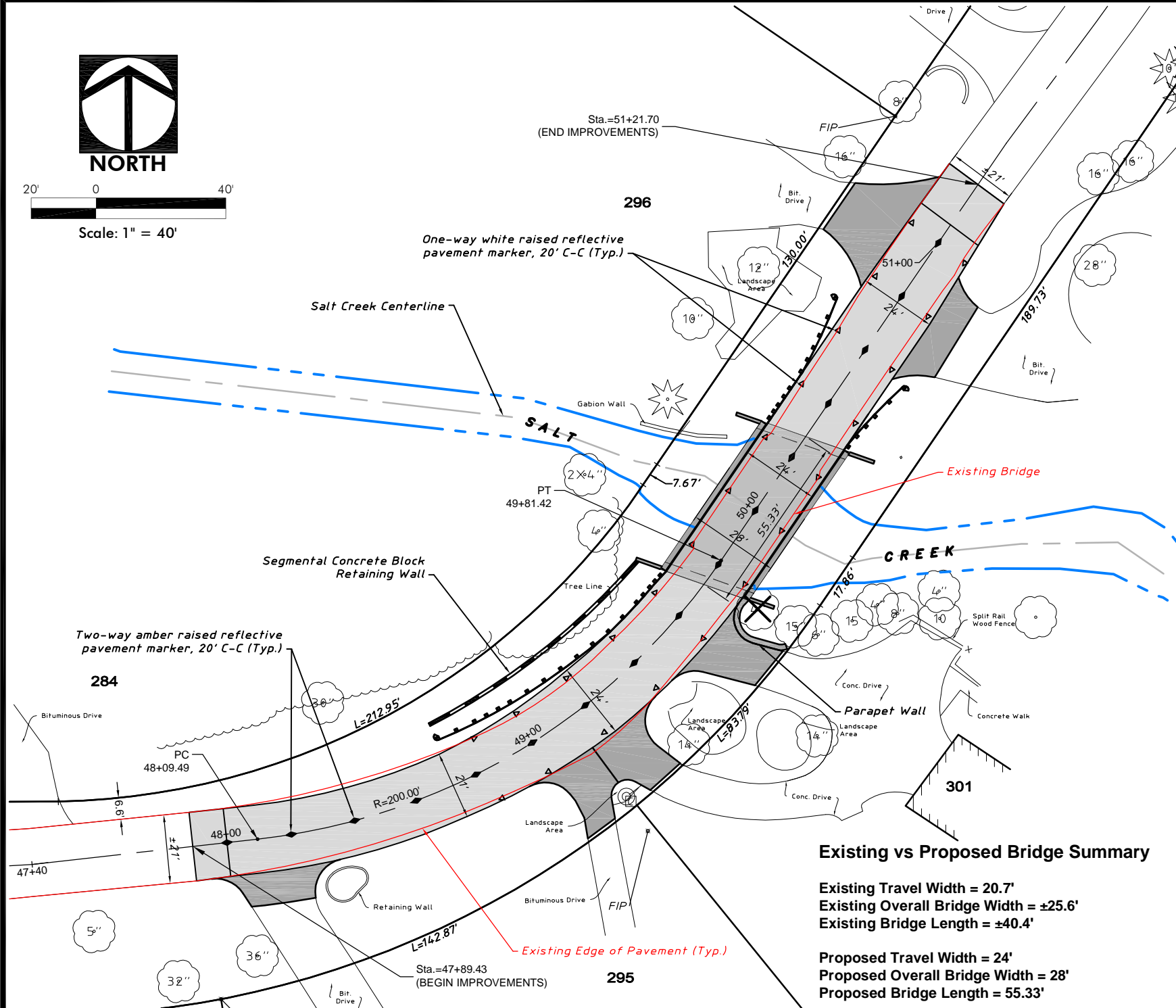
PALATINE TOWNSHIP, ILLINOIS

Project Manager: K A S
 Engineer: J D T
 Date: 2012-06-04
 Project No. 08041E
 Sheet 1 / 2



20' 0 40'

Scale: 1" = 40'



Existing vs Proposed Bridge Summary

Existing Travel Width = 20.7'
 Existing Overall Bridge Width = ±25.6'
 Existing Bridge Length = ±40.4'

Proposed Travel Width = 24'
 Proposed Overall Bridge Width = 28'
 Proposed Bridge Length = 55.33'

HAEGER ENGINEERING
 consulting engineers • land surveyors
 1304 N. Plum Grove Road, Schaumburg, IL 60173 • Tel: 847.394.6600 Fax: 847.394.6608
 Illinois Professional Design Firm License No. 184-003152
 www.haegerengineering.com

**PROPOSED CONDITIONS EXHIBIT
 MODIFIED ALTERNATE ALIGNMENT**
**BRIARWOOD LANE
 PLUM GROVE ESTATES SUBDIVISION**
 PALATINE TOWNSHIP, ILLINOIS

Project Manager: K A S
 Engineer: J D T
 Date: 2012-06-22
 Project No. 08041E
 Sheet 1 / 1